



VisStick-for improved slaughterhouse animal welfare

With **VisStick** your company is assured that the risk of unstuck pigs continuing on the slaughter line is minimal.

VisStick IS AN automatic vision system for monitoring the sticking procedure on slaughter pigs. After sticking VisStick determines whether blood is running from each pig. In case of no blood flow the operator is alerted to secure proper sticking.

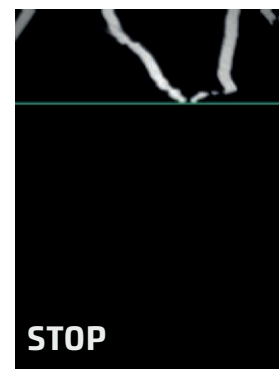
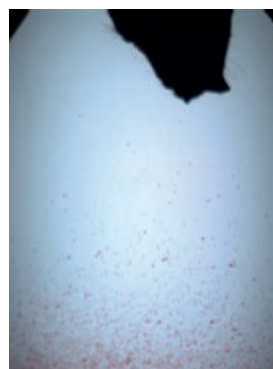
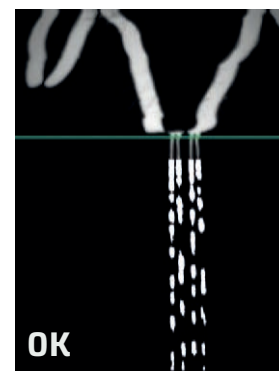
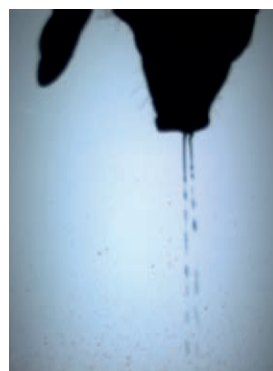
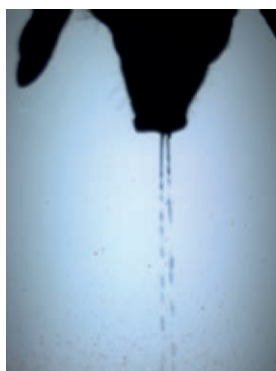
VisStick improves animal welfare by:

- Ensuring that pigs are stuck
- Avoiding that live pigs are transferred to the next stage of the process

VisStick is cost effective:

- It has a measuring capacity greater than 1400 pigs/hour
- It replaces manual human monitoring
- It is installed at the line with no or very few modifications to existing line

VisStick is installed in a large number of Scandinavian slaughter plants.



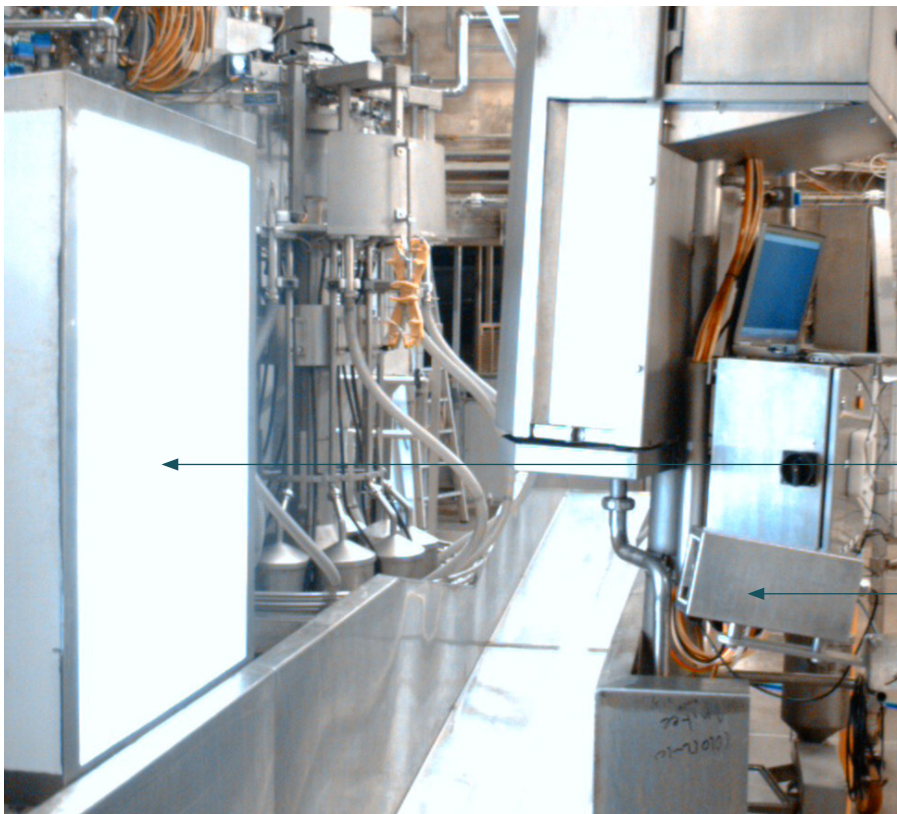
From two pictures, it is detected if blood is running from the pig's snout. If not, an alarm is activated



VisStick-for improved slaughterhouse animal welfare

THE SYSTEM VisStick has proven to be reliable and have improved animal welfare at slaughterhouses in a cost-effective way. It has been installed in all major Danish slaughterhouses, and VisStick is now being installed in several slaughterhouses in the EU and the USA.

Although pigs are anaesthetised before slaughter, it is the sticking and bleeding that actually causes death. Sticking of the pigs is carried out manually and there is a minor risk that a pig may not be stuck properly, with the result that it may still be alive at the scalding. This raises serious welfare issues, and the DMRI has therefore developed a vision-based automatic system to monitor that all pigs have been stuck before moving to the next stage of the process.



FLUORESCENT LIGHT

CAMERA

The system consists of a camera and a lamp with fluorescent light, a control panel and a computer. Pictures are taken by the camera.

ABOUT DMRI

DMRI is focussing our attention on methods and technologies for efficient production of safe meat products of a high quality at competitive prices. At the same time, DMRI is committed to enhancing the working environment and animal welfare as well as demonstrating due care to the external environment.

CONTACT

Niels T. Madsen
NTM@DTI.DK
+45 7220 2690

